

(1) EU - Type Examination Certificate

(2) Equipment and protective systems intended for use in potentially explosive atmospheres – **Directive 2014/34/EU**

(3) EU - Type Examination Certificate Number

EPS 17 ATEX 1 020 X

Revision 1

(4) Equipment: QT.Ex-M Actuator and FT.Ex Sensor

(5) Manufacturer: petz industries GmbH & Co. KG

(6) Address: Mühlenweg 2, 96358 Teuschnitz / Haßlach

(7) This equipment and any acceptable variation thereto are specified in the annex to this certificate and the documentation therein referred to.

(8) Bureau Veritas Consumer Products Services Germany GmbH, notified body No. 2004 in accordance with Article 21 given in the Directive 2014/34/EU of the European Parliament and of the Council of 26 February 2014, certifies that this equipment has been found to comply with the essential health and safety requirements relating to the design and construction of equipment and protective systems intended for use in potentially explosive atmospheres, given in Annex II of the Directive. The examination and test results are recorded in the confidential documentation under the reference number 17TH0220.

(9) Compliance with the essential health and safety requirements has been assured by compliance with:

EN IEC 60079-0:2018

EN 60079-11:2012

EN 60079-31:2014

EN 60079-1:2014

EN 60079-18:2015

EN 80079-36:2016

EN 60079-7:2015




EN 60079-26:2015

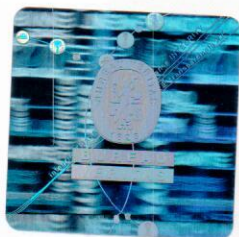
EN 80079-37:2016

(10) If the sign "X" is placed after the certificate number, it indicates that the equipment is subject to special conditions for safe use specified in the annex to this certificate.

(11) This EU - Type Examination Certificate relates only to the design and examination of the specified equipment in accordance with Directive 2014/34/EU. Further requirements of this Directive apply to the manufacture of this equipment and its placing on the market. Those requirements are not covered by this certificate.

(12) The marking of the equipment shall include the following:

QT.Ex-M.. Actuator		II 2G	Ex db eb mb ib IIC T4	Gb
		II 2D	Ex tb ib IIIC T130°C	Db
FT.Ex.. Sensor		II 2G	Ex h IIC T4	Gb
		II 2D	Ex h IIIC T130°C	Db
FT.Ex.. Sensor		II 1/2G	Ex ia IIC T6/T5/T4	Ga/Gb
		II 1/2D	Ex ia IIIC T130°C	Da/Db



Certification department of explosion protection

Hamburg, 2020-04-21

H. Schaffer

Page 1 of 2

Certificates without signature and seal are void. This certificate is allowed to be distributed only if not modified. Extracts or modifications must be authorized by Bureau Veritas Consumer Products Services Germany GmbH. EPS 17 ATEX 1 020 X, Revision 1.

(13)

Annex

(14) **EU - Type Examination Certificate EPS 17 ATEX 1 020 X**

Revision 1

(15) Description of equipment:

The QT.Ex-M.. can be installed in areas with potentially explosive atmosphere category 2,3, G and D. If the actuator is ON / OFF controlled it performs a 90° rotary movement and opens / closes (fire protection) dampers and fittings. An optional spring is used as emergency reset function to move the system in safe position. Part of the whole device is an integrated junction box. A LED and a push button are used for indication and identification. For the option QT.Ex-MFD... there is an intrinsically safe interface with M12 plug/ socket available to connect the thermo sensor FT.Ex-.. which can be installed in category 1.

The non-electrical parts also meet the explosion-proof requirements and the housing is part of the explosion protection. The entire device is explosion-proof.

Electrical data:

Power supply (terminal 1, 2, 3, 4) QT.Ex-M...SL

U	=	20 ... 70 V _{AC/DC} , 50 ... 60 Hz
Um	=	90 V

Power supply (terminal 1, 2, 3, 4) QT.Ex-M...SH

U	=	85 ... 250 V _{AC} , 50 ... 60 Hz
Um	=	250 V

Electrical data connection of internal position indication switch (terminal 5, 6, 7)

U	≤	250 V
I	≤	1 A
P	≤	10 W

Electrical data analogue output (terminal 8, 9, 10, 11, 12)

Signal	=	0-10 V / 0-20 mA
Um	=	30 V

(16) Reference number: 17TH0220

(17) Special conditions for safe use:

Maximal ambient temperature: $-40^{\circ}\text{C} \leq T_a \leq +70^{\circ}\text{C}$.

The enclosure of the actuator QT.Ex shall never be opened while circuits are alive.

(18) Essential health and safety requirements:

Met by compliance with standards.

Certification department of explosion protection

Hamburg, 2020-04-21

H. Schaffer

